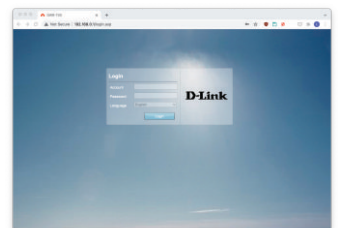


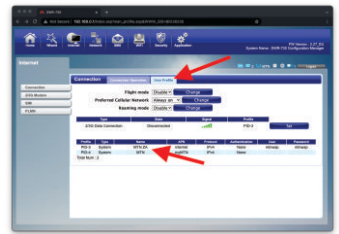
Setting the APN for OmniTel on the D-Link HSPA+ Mobile Router



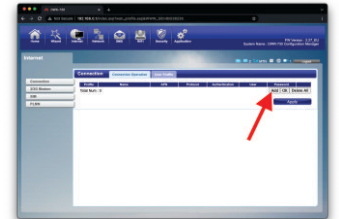
1. Open the back of the device by sliding off the battery cover.
2. Remove the battery and insert your OmniTel SIM card into its slot. Put the battery back when you are done. Leave the battery cover off for now.
3. On the inside of the battery cover you will see SSID & Password. These are the Hotspot ID (SSID) & Password to use to connect to the device WiFi Hotspot
4. Press and hold the top button on the side of the device to turn it on.
5. Go to your computer, phone or tablet's wifi settings. On the list of available wifi networks look for the name on the list that is the same as the SSID printed on the inside of the back cover. Select that wifi network.
6. Enter the password EXACTLY as it is printed (with capital and small letters) on the inside of the back cover. Once you have entered it in correctly you will be connected to the device
7. Now open your web browser. Any is fine, for example Chrome, Firefox, Safari
8. Type the following in the address bar: **192.168.0.1** and press Enter
9. You will get a D-Link login page. In the Account box type "admin". Leave the Password box empty and click login.
10. At the top of the screen look for and click the Internet icon



11. On the Internet screen you will see a list of APNs with names like “MTN” and/or “MTN ZA”. In the middle of the screen you will see two tabs, “Connection Operation” and “User Profile”. Click on the “User Profile” tab

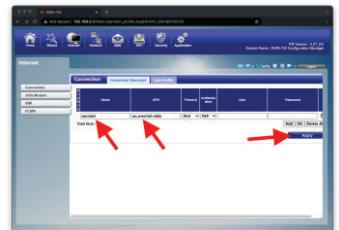


12. On the User Profile screen click on the “Add” button.

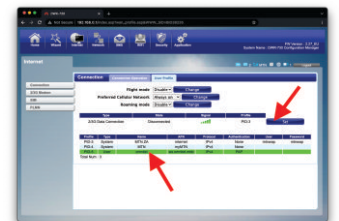


13. In the “Name” block type in **omnitel** and in the “APN” block type in **ws.omnitel.mbb**. Do NOT change any other settings. Then click the “Apply” button.

14. Click the “Connection Operation” tab. This will take you back to the previous screen, only now there will be a new APN listed which has the OmniTel details you have just entered. Click on the OmniTel Name or APN and you will see this line in the table turn bright green. Now click on the “Set” button. A box will pop up saying the APN is resetting.



15. When the box disappears you will see that the OmniTel line in the table is no longer green and in that line under the “Authentication” heading you will see the word “PAP”.



16. This means you have successfully configured your router. You can now close your browser.

17. If you have not yet registered your OmniTel SIM and account, please do that now by looking for the following icon on the website: **omnitel.co.za**



18. You will need to have your SIM card as well as your RICA documentation. As soon as you are ready to register your SIM please click on the icon and follow the instructions on the screen.

